

Door
Prizes



CANADA NICKEL CANADA NICKEL CO. AND MATACHEWAN FIRST NATION
COMPANY

You're invited!!! What Matters Most...

Canada Nickel is in the preliminary stages of the Federal Impact Assessment process, and would like Community Member's feedback on the Initial Project Description that they plan to submit in June. The mine is situated North of Timmins and West of Cochrane, just above Kidd Mine.

This is the start of a long-term process and continued cooperation with Canada Nickel and our community along with Mattagami, and Wabun Tribal Council.

Representatives of Canada Nickel Co will leave after the presentation and answer period to allow open conversation with our membership.

The Draft Summary Initial Project Description will be posted on the MFN website. Please look through it and see if any concerns come to mind and share with any Band Members you know who may use the area.

Date: May 24, 2022,

Time: 6:00 to 8:00 p.m.

Dinner will be served at 5:00 p.m.

Where: MFN Log Building and Zoom

Zoom Link: <https://us06web.zoom.us/j/83108770830?pwd=QmNHbXdTWk4rcmF3RifBcVFMemRWUT09>



Matachewan First Nation

P.O. Box 160, Matachewan ON

P0K 1M0

705 565 2230

(fax) 705 565 2585

Delta Rey Flood

Impact Assessment Coordinator

iac@mfnrez.ca

705-565-2230 ext 232

cell: 705-358-4913



CANADA NICKEL COMPANY'S CRAWFORD NICKEL PROJECT

Summary Initial Project Description

A preliminary overview of Canada Nickel's flagship Crawford Nickel Project, including project information and early identification of potential impacts and mitigation measures.

This summary document was compiled in reference to a draft of the Project's Initial Project Description, the initiating phase for the federal Impact Assessment Process. The draft Initial Project Description is subject to change following feedback from the Impact Assessment Agency of Canada and Canada Nickel's own engagement activities, and is not yet fully available to the public.

Project Overview



Canada Nickel Company is a junior exploration company advancing the Crawford Nickel Project (the Crawford Project) as a carbon neutral source of some of Canada’s critical minerals: nickel, iron, and cobalt. Canada Nickel plans to feed into the low carbon technology revolution through the electric vehicle battery and stainless-steel markets. Work on the Crawford Project’s Feasibility Study is underway, scheduled for completion in Q4 2022.

Key Points:

- ✓ Estimated 40+ year life of mine
- ✓ Greenfield site with no history of mining or advanced exploration
- ✓ Ongoing surface drilling program active for approximately 3 years, beginning in 2019

Ongoing Activities:

- Continued environmental baseline studies
- Detailed engineering studies towards completion of Feasibility study
 - Project design
 - Highway and transmission relocation
 - Metallurgical test work
 - Net Zero/carbon sequestration research and testing
- Continued engagement with Indigenous Peoples, stakeholders, and the public



COMMUNITY ENGAGEMENT

PHASE 1 STAKEHOLDER

Summer/Fall 2021

- ✓ Preliminary stakeholder meetings – General Project Information
- ✓ Feedback Survey – Topics of Interest and Engagement Preferences
- ✓ Opening of regional office
- ✓ Stakeholder meetings – Baseline Study Results and Engagement Plans
- ✓ Feedback Survey – Engagement Strategy
- ✓ Release of first Community Newsletter

PHASE 2 STAKEHOLDER

2022

- ✓ Stakeholder and public meetings to review and obtain feedback/comments on the Initial Project Description and Detailed Project Description
- ✓ Formation of advisory committees (Environment, Labour and Training, Local Contributions and Procurement)

INDIGENOUS ENGAGEMENT

- ✓ Transparent, open, and ongoing dialogue with Indigenous Peoples
- ✓ Collaborative approaches to engagement strategies, completion of environmental, socio-economic, and traditional knowledge and land use studies
- ✓ Focus on capacity building and meaningful discussion around project impacts, design, and operation

Mine Layout and Infrastructure



Processing Capacity:

First 4-5 Years: 42,500 tonnes per day
 Remainder: 120,000 tonnes per day
Total Material to be mined:
 Total: 5,186 million tonnes
 Ore: 1,671 million tonnes

Stockpile storage capacity

Ore stockpiles: 295 Mm³
 Mine rock stockpiles: 963 Mm³ and 461 Mm³
 Overburden/Topsoil stockpiles: 318 Mm³
 * Mm³ = million cubic metres

Power Supply

Supplied through development of 230 kV line extending to Porcupine sub station in Timmins

Emergency diesel fuel generators on site

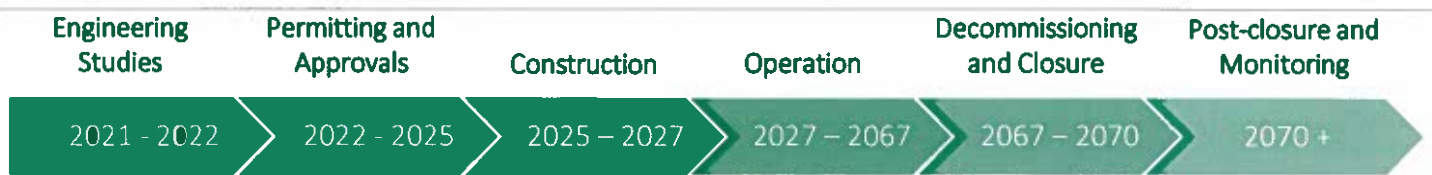
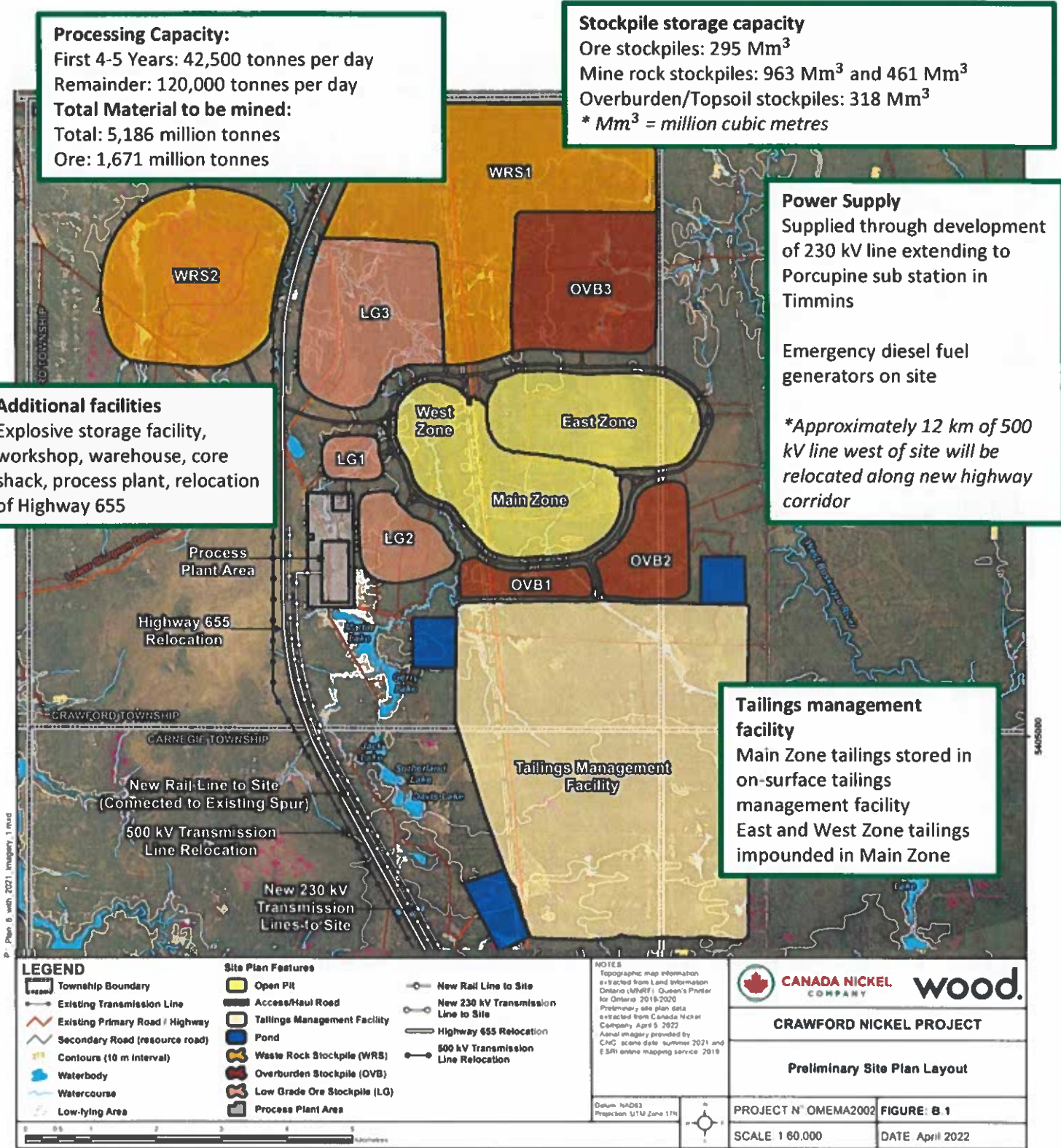
*Approximately 12 km of 500 kV line west of site will be relocated along new highway corridor

Additional facilities

Explosive storage facility, workshop, warehouse, core shack, process plant, relocation of Highway 655

Tailings management facility

Main Zone tailings stored in on-surface tailings management facility
 East and West Zone tailings impounded in Main Zone

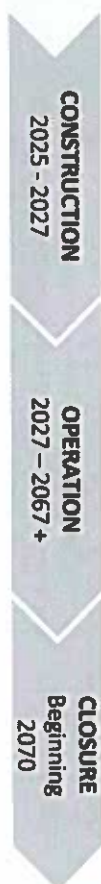




Preliminary Baseline Studies

AIR, NOISE, VIBRATION, LIGHT	Air quality baseline monitoring commenced November 2021 and is ongoing. Additional studies planned for 2022 for noise, vibration, and light emissions.
HYDROLOGY	Sampling completed in North Driftwood and West Buskegau rivers , studies ongoing
HYDROGEOLOGY	Drilling program and permeability testing completed, monitoring wells installed
GEOCHEMISTRY	Indicate that ore and waste rock are non-acid generating, testing to be continued
TERRESTRIAL	Studies ongoing, results to date consistent with regional norms and expectations
AQUATICS	Completed in West Buskegau, North Driftwood, and Mattagami rivers, and tributaries Studies ongoing, results consistent with regional norms and expectations
SPECIES AT RISK	Though not observed, project located along southern boundary of Woodland Caribou. Observed species of conservation concern: Black Ash, Bald Eagle, Canada Warbler. Studies ongoing.
SOCIO-ECONOMIC	Preliminary desktop analysis of community social, economic, and health contexts completed Studies ongoing – community feedback requested to inform study results
CULTURAL HERITAGE AND ARCHEOLOGY	Preliminary desktop analysis completed. Field assessment to be conducted in areas of increased potential (ex. bodies of water)

Preliminary List of Activities



- Environmental permitting and mitigation of effects, as required
- Complete engineering studies, corporate decision to proceed
- Hiring and procurement
- Relocation of Highway 655 and 500 kV transmission line, construction of rail spur
- Site preparation, construct new site facilities, open pit development, water management/treatment works, mine waste management facilities
- Develop aquatic habitat offset and compensation features, as needed
- Overburden/mine rock stockpiled, or used in progressive reclamation
- Ore extracted from open pit temporarily stockpiled, or transported to primary crusher
- Ore processing, produce concentrate for shipping
- Tailings from Main Zone stored in surface facility (once Main Zone emptied and mining in East Zone, tailings and overburden will be stored in Main Zone)
- Ongoing water discharge management and treatment, waste management
- Progressive reclamation where and when possible
- Updates/amendments of Closure Plan as needed
- Remove from site, once no longer needed; mine equipment, reagents and chemicals for proper disposal, site power infrastructure
- Allow open pit to flood (If appropriate, connect flooded open pit to local drainage system)
- Prepare site for closure (Demolish facilities, remediate residual ground spillage, if any, etc.)
- Revoke approvals to operate when no longer required
- Return of reclamation financial assurance

The following will be ongoing throughout all stages of the project: development/implementation/continuation of relevant environmental protection and monitoring plans; and meaningful engagement and consultation.



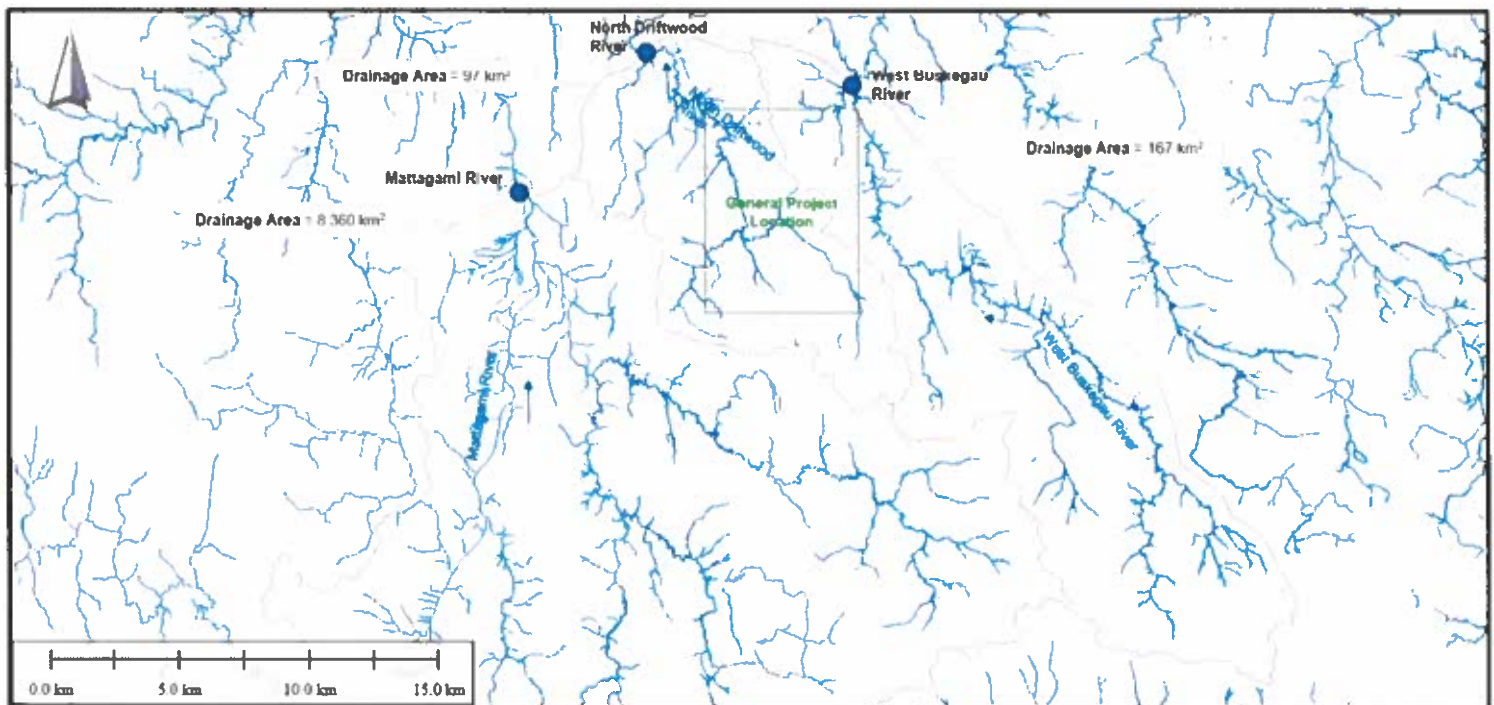
The proposed water management plan includes collection of groundwater, runoff, and direct precipitation in the open pits. This water will be collected during dewatering, pumped to a sedimentation pond, and used as additional water for the process plant. General surface runoff and precipitation will be collected in ditches/collection ponds and pumped to the sedimentation pond.

Potential effluent discharge locations under consideration are:

- **Mattagami River (located approximately 10 km from site),**
- **North Driftwood River,**
- **West Buskegau River, or**
- **A combination of locations**

Regardless of location, site effluent will meet regulatory requirements for safe discharge to the environment. This may involve, if necessary, construction and operation of a water treatment plant on site

Effluent discharge could impact the flow and water levels of the selected location. The water management system will ensure that site effluent meets all regulatory requirements and can be safely discharged to the environment. If required, a water treatment plant may be installed to ensure effluent quality can be consistently achieved. The final location will be selected with care to make sure that the receiving watercourse can receive this effluent and all related regulatory requirements are met.



Potential Project Impacts



Note that this is not a full impact assessment, merely a preliminary evaluation.
IMPACT: Potential Effect (Preliminary) **PROPOSAL:** Proposed Mitigation (Preliminary)

AIR AND NOISE EMISSIONS

IMPACT: Release of airborne particles, noise disturbance to other area users (note that site is remote from residences)
PROPOSAL: Meet regulatory requirements, implement necessary control measures, measure to identify areas with opportunities to reduce sound emissions effects

GREENHOUSE GAS EMISSIONS

IMPACT: Potential to contribute to global carbon dioxide emissions
PROPOSAL: Reduce site footprint, apply results of carbon sequestration research and testing, use of electric equipment

LIGHT

IMPACT: Increase in ambient light on site and localized glow off-site
PROPOSAL: Care to ensure appropriate aim for lights to minimize off-site disturbance

INDIGENOUS RIGHTS

IMPACT: Impacts on how and where Indigenous Peoples' Rights are exercised
PROPOSAL: Collaborative development of management practices/plans to be implemented

LOCAL WATERBODIES/WATERCOURSES

IMPACT: Overprinting of small creeks/ponds, species/habitat disturbance (vibration, crossings, discharge)
PROPOSAL: Meet regulatory requirements, compensatory aquatic habitat (consulted upon and approved)

GROUNDWATER SYSTEM

IMPACT: Open pit dewatering affecting local groundwater levels and surface water flows
PROPOSAL: Modelling to assess effects, flows to return after open pit refills, geochemistry program underway

NATURAL VEGETATION AND WILDLIFE

IMPACT: Displacement of habitat, wildlife disturbance
PROPOSAL: Reduce site footprint, avoid clearing during nesting season, reclaimed to support future habitat

HUNTING, FISHING, AND TOURISM

IMPACT: Disruption to local experience in immediate vicinity of site
PROPOSAL: Collaboration with relevant stakeholders to mitigate effects during operation

COMMERICAL OPERATIONS

IMPACT: Limit access to people/resources for other industries, however could draw workers to area
PROPOSAL: Optimize economic benefits to local and regional economies, including Indigenous Peoples

TRADITIONAL USE OF LANDS AND RESOURCES

IMPACT: Effects on spiritual connections, experiences, locations of value, and cultural practices
PROPOSAL: Ongoing engagement with Indigenous Peoples to identify and mitigate potential effects

INDIGENOUS/PUBLIC HEALTH AND SAFETY

IMPACT: Impacts to air and water quality, changes to community safety, well-being, and health
PROPOSAL: Monitoring quality and implementing control measures. Working with local communities and Indigenous Peoples to fully understand impacts on health and safety and develop collaborative management programs or projects

SOCIO-ECONOMICS

IMPACT: Benefits, such as employment, procurement, and education/training, and effects including strain on healthcare services, increased traffic, and decreased housing availability
PROPOSAL: Collaborate to ensure positive benefits, implement community contributions and procurement program

PHYSICAL AND CULTURAL HERTIAGE

IMPACT: No anticipated effect to known archeological sites, effect on cultural heritage to be determined
PROPOSAL: Identifying any as yet undetected features or artefacts during construction

Contact Us



HEAD OFFICE **130 King Street West, Suite 1900**
Toronto, ON M5X 1E3

TEL. 647-256-1955
info@canadanickel.com

REGIONAL OFFICE **250 Third Ave.**
Timmins, ON P4N 1E3

TEL. 705-363-7322
community@canadanickel.com



Canada Nickel Company



@CanadaNickel



canadanickel.com

Qualified Person and Data Verification

All technical information contained herein has been reviewed and approved on behalf of Canada Nickel Company Inc. by a "qualified person" as such term is defined by National Instrument 43-101 – *Standards of Disclosure for Mineral Projects*.

Cautionary Statement Concerning Forward Looking Statements

This document contains certain information that may constitute "forward-looking information" under applicable Canadian securities legislation. Forward looking information includes, but is not limited to, future exploration and development results, completion of acquisitions and corporate and technical objectives. Forward-looking information is necessarily based upon a number of assumptions that, while considered reasonable, are subject to known and unknown risks, uncertainties, and other factors which may cause the actual results and future events to differ materially from those expressed or implied by such forward-looking information. Factors that could affect the outcome include, among others: future prices and the supply of metals, the future demand for metals, the results of drilling, inability to raise the money necessary to incur the expenditures required to retain and advance the property, environmental liabilities (known and unknown), general business, economic, competitive, political and social uncertainties, results of exploration programs, risks of the mining industry, delays in obtaining governmental approvals, failure to obtain regulatory or shareholder approvals, and the impact of COVID-19 related disruptions in relation to Canada Nickel Company Inc.'s business operations including upon its employees, suppliers, facilities and other stakeholders. There can be no assurance that such information will prove to be accurate, as actual results and future events could differ materially from those anticipated in such information. Accordingly, readers should not place undue reliance on forward-looking information. All forward-looking information contained in this document is given as of the date hereof and is based upon the opinions and estimates of management and information available to management as at the date hereof. Canada Nickel Company Inc. disclaims any intention or obligation to update or revise any forward-looking information, whether as a result of new information, future events or otherwise, except as required by law.

