



ALAMOS GOLD INC.
YOUNG-DAVIDSON

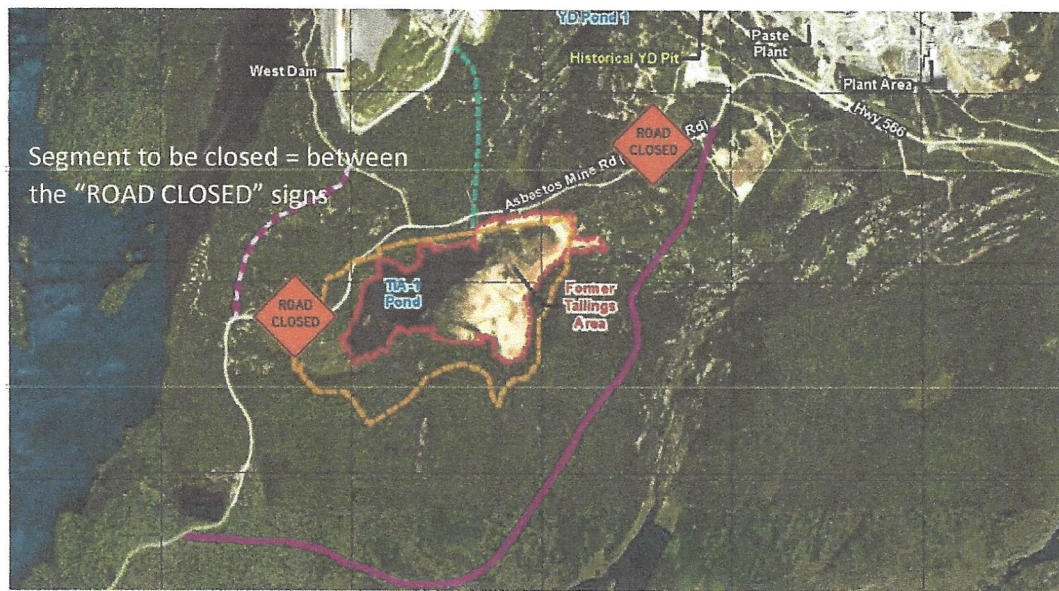
Micheline Dube
IBA Coordinator
Matachewan First Nation
P.O. Box 160
Matachewan, ON, P0K1M0

November 14, 2018

RE: Old Asbestos Mine Road Closure

Dear Mrs. Dube,

This letter is to inform Matachewan First Nation that the old segment of the Asbestos Mine Road will be closed to public access. Access can still be achieved by using the newly constructed re-aligned road segment. Approval for closure has been granted by the MNR. Map of area:



The purple on the map outlines the new, open road segment. The former access route will be gated for public safety due to heavy machinery and equipment traffic. If there are any questions regarding this road closure, please contact me by phone at 705-565-9800 X2223 or email at lzapotochny@alamosgold.com.

Best Regards,

Leah Zapotochny
Environmental Superintendent, Young-Davidson Mine Site

Young-Davidson Mine Site, P.O. Box 187
Matachewan, ON POK 1M0
Phone: 705-565-9800 Fax: 705-565-1169
www.alamosgold.com